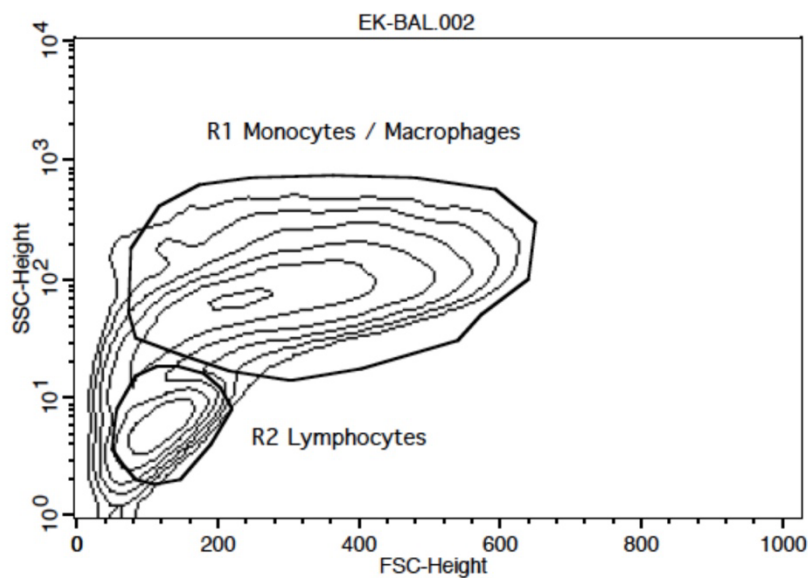


SUPPLEMENTARY FIGURE 1

Supplementary Figure 1. Flow cytometric analysis of the percentage of lymphocyte in bronchoalveolar lavage cells. A representative contour plot from a single patient is shown, cells were acquired on a FACSCalibur flow cytometer (BD Bioscience, Heidelberg, Germany). Gating strategy used forward-scatter-height (FSC) versus side scatter height parameters. Region 1 was gated on monocytes/macrophages (R1, gated number of cells given in % of total) and Region 2 was gated on BAL-lymphocytes (R2, gated number of cells given in % of total) in Region statistics underneath. The respective percentage of BAL-lymphocytes out of the population of BAL-monocyte/macrophages (R1) and BAL-lymphocytes (R2) was used to extrapolate SFCs per 250,000 cells per well to 1 million lymphocytes in BAL.

Calculation: $(\text{SFC} / 250.000 \text{ BALCs} \times 4) \times (\text{G1} + \text{G2} \text{ in } \%) / (\text{G2} \text{ in } \%) = \text{SFC} / 1 \text{ million BAL-lymphocytes}$



Region Statistics

Acquisition Date: 18-Mar-20
Total Events: 46028
X Parameter: FSC-Height (Linear)
Y Parameter: SSC-Height (Log)

Region	% Total
R1 Monocytes / Macrophages	63.45
R2 Lymphocytes	29.35